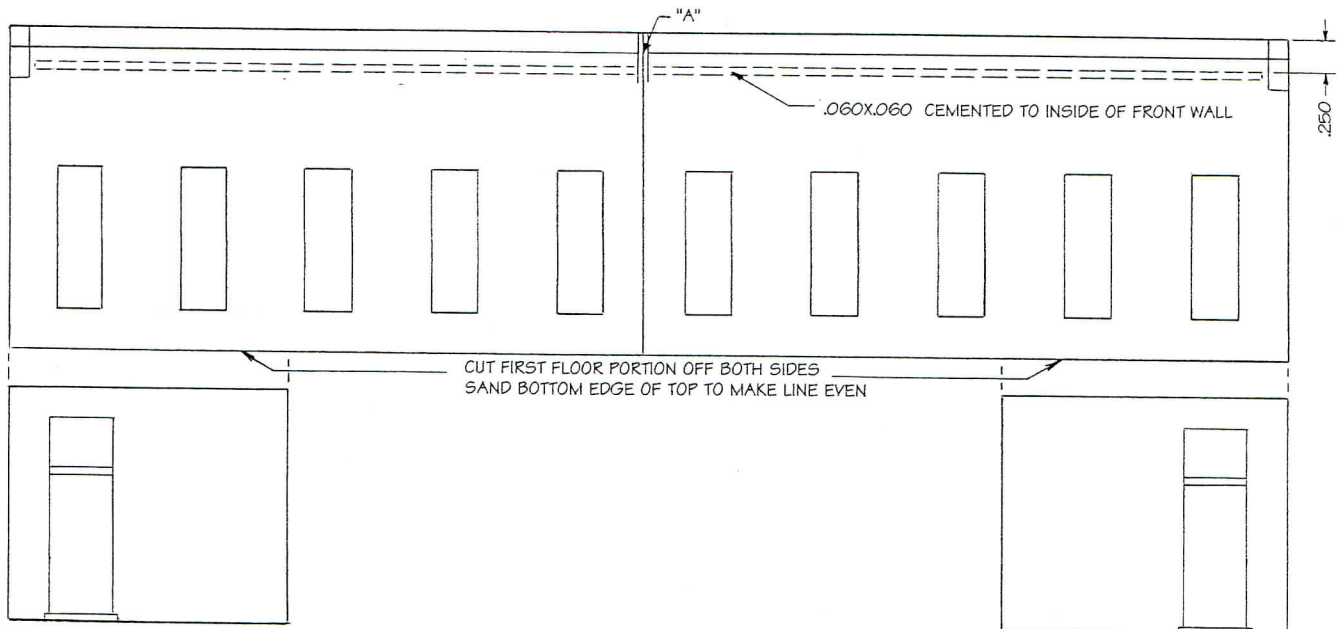


To make the front of the building, again, it is joined from two symmetric halves. In this case, there are no molded-in cutting guides. Cut the first floor portion off both halves, and you may either discard or save those small pieces in your scrap box for future projects. The cutting is quite easily done with the razor saw, by using the lower edge of the second story as a guide for the saw. Be sure not to force the cutting - just let it flow easily which will result in a straighter and smoother cut.

Now cement the two halves together again with a butt joint as you align the brick pattern in the middle. After the cement has set, file the bottom edge of the assembly smooth and straight to match the uncut portion of the bottom edge.

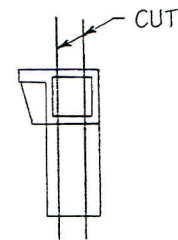
On the back side of the assembly, we'll need a support for the roof, so now is the best time to cement the length of 0.060"x0.060" strip stock about 1/4 inch from the top as shown on the drawing below.



To finish the second story front of the building we still have an empty spot at point "A" as shown in the drawing above. There are two pieces which were molded with the two front halves as shown in the sketch to the right.

Notice the way the piece is cut vertically and filed to fit into the space at "A". This is a tedious job and needs to be done carefully.

However, if you don't succeed the first time, there is a second piece for you to try again.



TRIM PIECE SHOWN ENLARGED