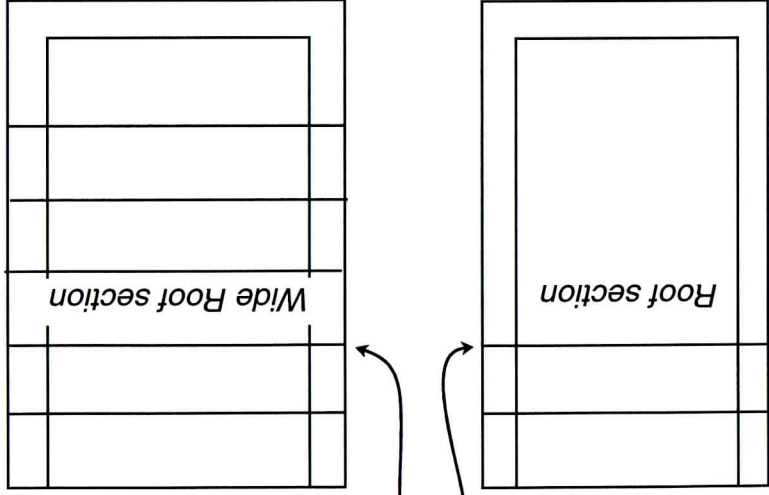


Roof with overhang Instructions

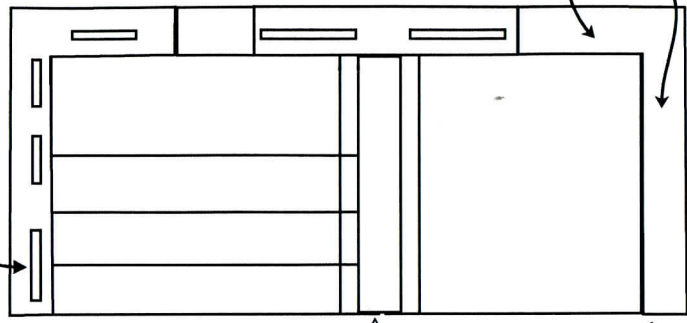
Figure 4

Step 1 This kits comes with two different width roof sections to produce a roof with overhang. (White part, bottom side shown)

Cut the roofs at the second cut line for this kit.



Step 3 Cut off the extra length so that your part looks like this.



Remove all the tabs as shown on both halves.

Remove this tab.

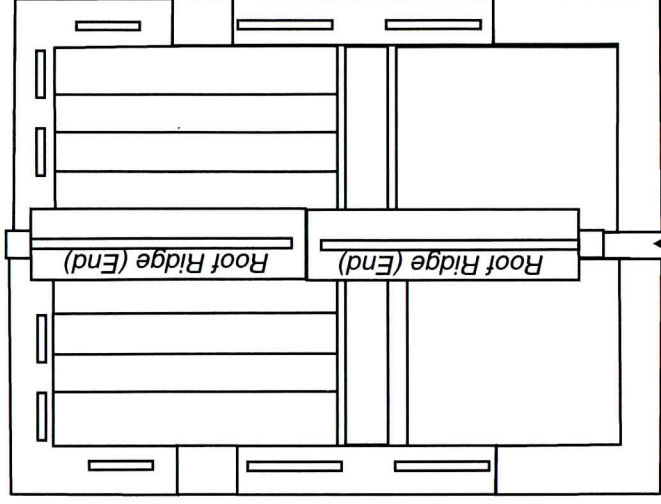
The short roof ridge part is located on the same sprue as the wide roof. Glue this part in the gap as shown. This part has a flat bottom and peaked top. This will be the overhang side of the roof.

Step 4

Glue the roof sections to the roof ridges as shown.

Note: Be sure the roof dries with the same slope as the roof ridge.

Short roof ridge



Cut a small piece of roof trim and glue on last. Remove the tab to make cutting easier.

Step 2

Cut the parts shown below off of the sprue. Glue one roof and one wide roof together as shown. Repeat steps but with wide roof on the left hand side.

