

Stock No. 699-6027

sure to keep the edges square as you sand the sides smooth.

about using the wrong length piece and then coming up short later on.

Start by trimming off the modules from their sprues and remove all the tabs on all four sides of the modules. Lightly sand (emery board) the four sides of the modules to remove any burrs. Be

You will also see that there are several Evergreen strips which this kit uses. These strips are all cut to the same length so that you won't have to worry

Notice that these pieces are different in size, so be sure not to use the wrong size when gluing together.

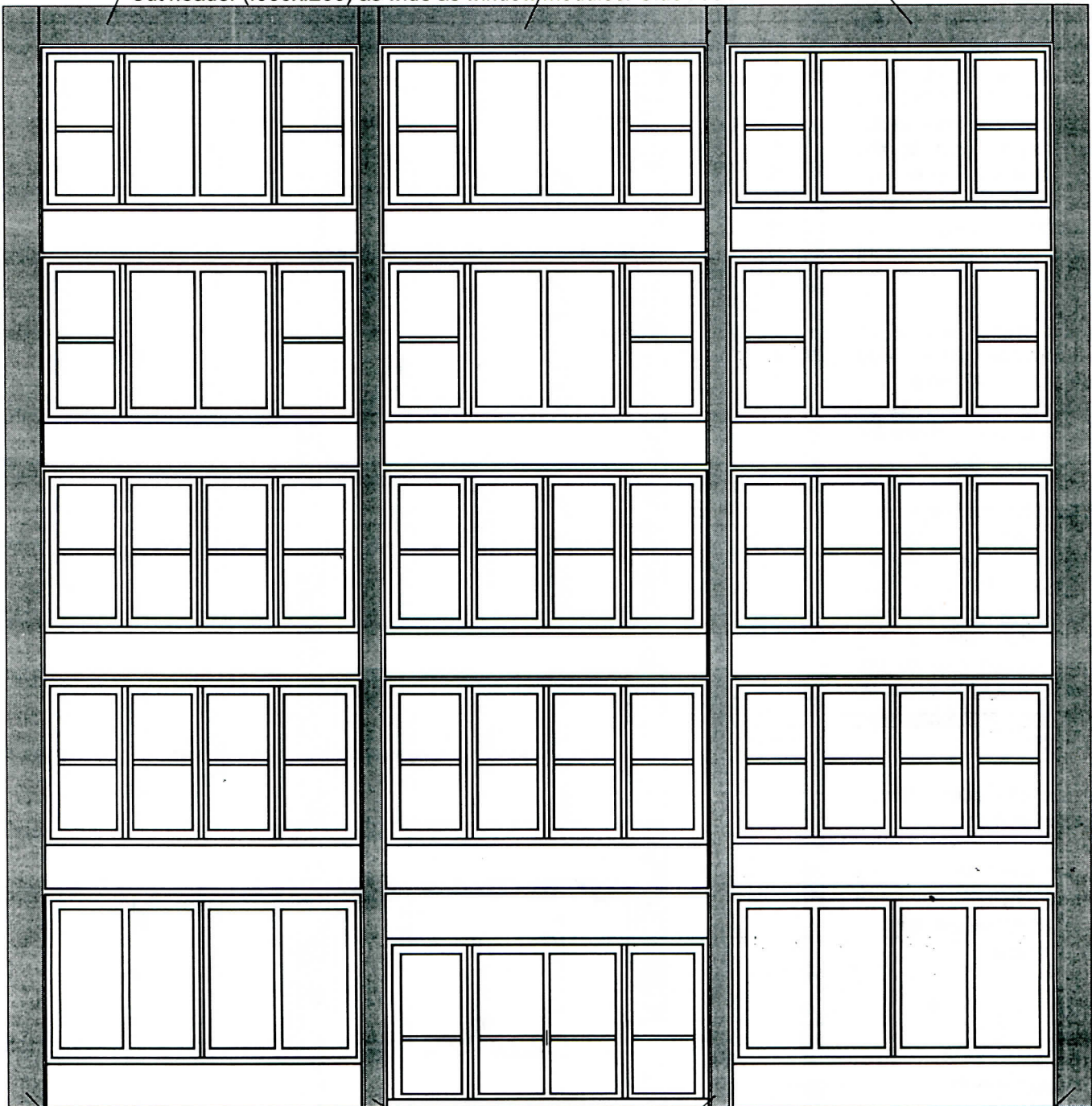
Profile (endview)

Facia (.080x.250) Glue to the outside edge of roof and plate. (do last after roof)

Roof (3 black sheets) Glue together and cut so that it is flush with the outside edges of the plate. (do after plate)

Plate (.040x.156) Cut so that it overhangs edges. Trim to fit after side walls are attached. (do after building walls)

Cut header (.080x.250) as wide as window modules. Glue flush with back side.



Column (.125x.250)
Cut flush with top of header.

Column (.125x.125)
Cut flush with top of header.

Column (.125x.250)
Cut flush with top of header.