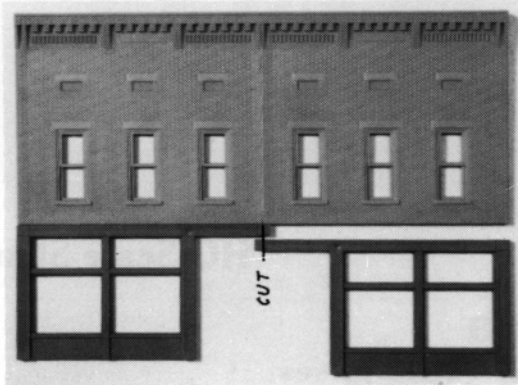
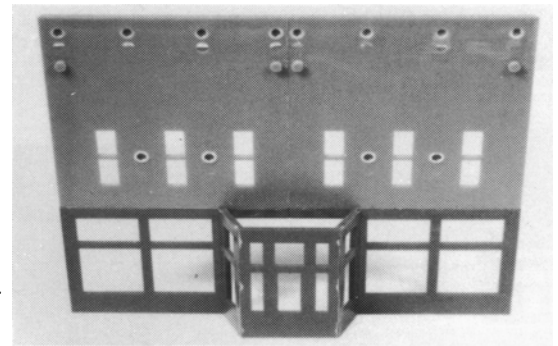


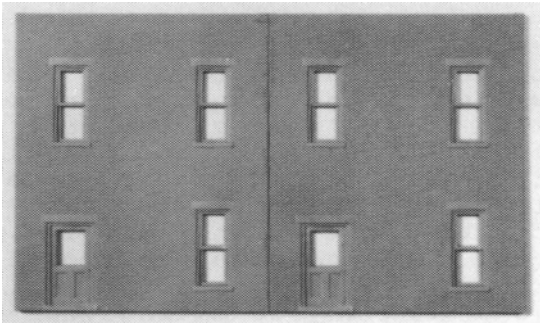
To make the second story front of the building, cut the two parts from the back of the molded-in cutting lines, and sand the cut surfaces smooth, so that a solid and clean glue joint will result, as shown.



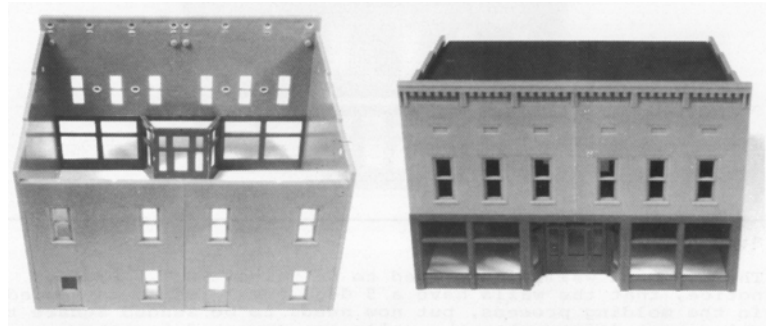
Cut the store front pieces, so that the overall width will match the second story portion, and cement them in place.



Next assemble the recessed entry and attach the assembly to the back of the front store windows.



The two back wall pieces need to be joined next. Please notice, that the walls have a 5 degree bevel, which is needed in the molding process. This needs to be sanded square to get a neat joint, when the walls are cemented together.



Cement the four wall assemblies together as shown, but make sure that they are square to each other. Next, cement the two black roof panels together, and then glue the roof to the building. The front of the roof rests on the four pins, which protrude from the back of the second story fronts, and in the back, it rests on top of the walls.