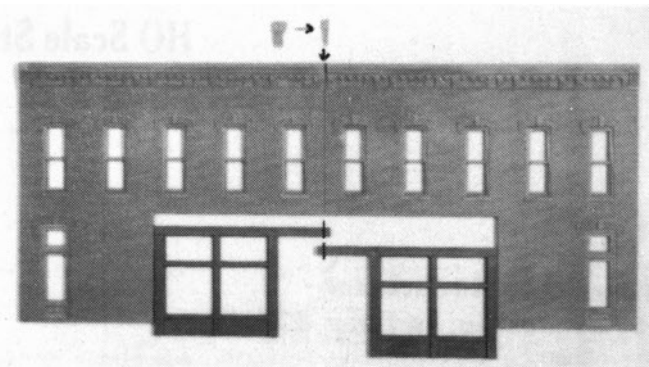
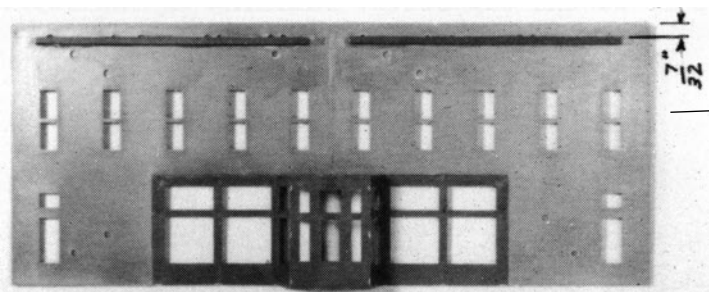


Start with the back wall. Find the two walls as shown. Cut along the cut lines (on the back side of the walls) and remove the top and side portion of the wall, (sand or file any rough edges) then cement the two halves together as shown below.



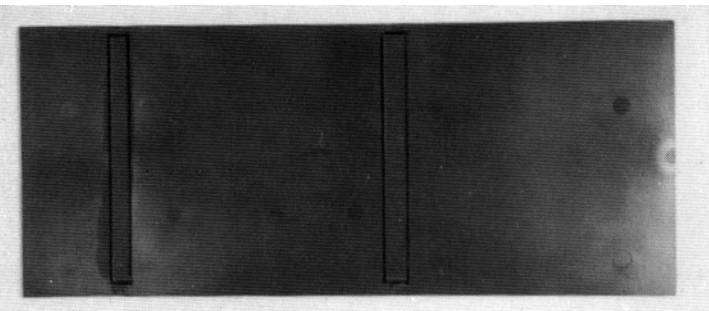
Cement the two front halves together. Then cut the store front pieces at the top beam to fit in the opening and glue them in place. Cut the small trim piece (top of photo) to size, to fit in the opening at the top of the seam as shown.



Cut two strips (1/8 X 4 inches) from one of the black roof pieces. (There is more roof than you need) Mark a line 7/32 down from the top and glue the two black strips in place. Also cement the doorway parts together and to the back of the front.



On the left and right side wall cut along the cut line to shorten the depth of the building so that the roof will fit. Cement the four wall assemblies together as shown, but make sure that they are square to each other. Choose one of the freight doors and glue it to the back wall from inside the building.



Lay the three roof pieces face down and measure the length of the building where the roof is to be installed. Cut the roof to that length and use the remainder of the roof as glue strips and glue over the joints of the roof. To improve the appearance of the roof, use 1/2" wide masking tape to simulate roof covering. Overlap the strips, paint it a flat black. Add the trim cap tiles to the top of the side walls and